

February 2012

“The Messenger of Love”

Volume 16 Issue 2

Ka Elele Aloha

Christ Church, Uniting Disciples and Presbyterians

Worship—Sundays 10 am

1300 Kailua Rd., Kailua, HI 96734-4356
 Rev. Kerry Grogan Pastor
 Email—ccu@hawaii.rr.com

Phone: (808) 262-6911
 Pastor’s Cell Ph: (808) 354-3427
 Website—www.ccukailua.org

Features

from the Pastor . . . 1

Contents

About Disciples	6
About Presbyterians	6
Adult Study	5
Birthdays/Anniver’s	7
Bolenge Hospital	5
CCU Thinks Green	4
Clerk’s Report on Council Retreat	3
Event Schedule	2
Family Promise	5
Flower Calendar	7
Lenten Devotional Guide	2
Membership Comm.	4
Memories	6
Organizational Diagram	4
Pillow Case Dresses	2
Worship Assignments	7

The March Newsletter information deadline is February 27. Please have information into the office by that date.

from the Pastor . . .

It’s hard to believe that the season of Lent is just around the corner, it seems like we just finished Advent and Christmas! January was a busy and full month. I loved getting to have my daughter Annie here for a nice long visit.

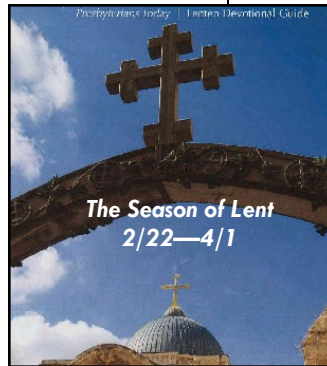
This month we will begin the Season of Lent, a time in which themes of wilderness wandering, personal reflection, loneliness, introspection, and disorientation are explored. As the church’s worship group discussed this, we decided it would be appropriate to visually symbolize these things in our worship space.

Our Ash Wednesday service will be a time to enter into Lent through prayer, silent meditation, and walking a labyrinth. The labyrinth will be set up throughout Lent so that folks can walk the labyrinth before or after worship, or at other times during the week.

The first Sunday of Lent will be “Mardi Gras” Sunday. Although this is a bit non-traditional, we feel it is still appropriate to start off Lent a little differently. You are encouraged to dress up, wear a costume and be prepared for anything! We are also inviting people to bring a mask, or other item symbolic of something they want to let go of, or lose for Lent.

As part of this theme of “disorientation” we will be rearranging the sanctuary for the six Sundays of Lent. As we prepare spiritually for the journey of Lent, I invite you to reflect on the times in our lives when we feel

lost, disoriented, wandering, or unsure of the future. Then, as we journey together like a band of wandering pilgrims, I invite us to be intentional about using those feelings to remind us of our dependence on God for security, to impel us to turn to prayer, to listen, and to discern the work of the Spirit.



Let us use the season of Lent to remind ourselves that “to everything there is a season.” We may find that even though we may feel lost and disoriented, we can trust that we will find signposts along the way to lead us. While we may not like times of uncertainty and change, we can also trust that we will have times of knowing a sense of peace and security rooted in God’s presence.

I hope you will enter into this Lenten journey of disorientation with an open heart and mind. As we travel together toward Easter I know we will find the joy and new life of the Easter season if we are willing to make the journey.

Notice of Annual Meeting of the Congregation of Christ Church Uniting Sunday, February 5, 2012

The meeting will be held within our 10 am Worship Service of the day and will feature “Celebration.”

Agenda:

- Receive CCU Annual Report
- Celebrate CCU 2011 successes
- Remember CCU member Jim Young & Andy Catoe

February 2012

CCU Event Schedule:

Key: K = Kitchen L = Lanai O=Ohana Rm
PS = Pastor's Study S = Sanctuary B3=upstairs classroom

- 2/4, 8am Men's Breakfast
2/4, 9:30 am Membership Commission Mtg.
- 2/5, 8:30-11:30am HI-5 container pick-up @ CCU parking lot
- 2/5, 12, 19 & 26 Adult Church at Study 8:30am (O) (see page 5 for details)
- 2/5, 10:45am Worship & Annual Meeting of Congregation
- 2/12, 19 & 26 Worship 10 am
- 2/8, 6:30pm Stated Meeting of Council
- 2/11, 10:30am Women's Aloha Fellowship Brunch @ Cinnamon's in Kailua
- 2/22, 7pm Ash Wednesday Service

"40 Little 'pillowcase' Dresses in 40 Days" — a CCU Lenten Project

Contact Melissa Belanger (mbelanger@hawaii.rr.com or 383-8975) to let her know of your interest in this project.

We have a timeline of finishing all 40 dresses by World Missions Sunday / Pentecost on May 27, 2012. As soon as we have 40 pillowcases, I will schedule a 2-3 hour event (including perhaps a meal of soup) when we can gather together with scissors and sewing machines to make as many dresses as we can that day/evening. I know some people prefer to make dresses at home and that is fine too.

We are looking for willing hands, hearts, pillowcases, thread, elastic, double biased tape and/or monetary help. Please let me know what you can contribute. The Witness Commission will cover the \$2/dress requested which covers shipping only. All are welcome to join in the fun! This would be a great time to invite a friend to CCU if you know someone who sews or would like to learn.

PS: Melissa reports that several women in the church have already volunteered to fund this project.
Mahalo nui loa!

An invitation to pilgrimage

I didn't really want to go. The Holy Land sounded hot and dusty and vaguely dangerous. But when I was given the opportunity to travel to Israel as part of a documentary on the subject of pilgrimage, it felt as if the Spirit had offered a gift I couldn't refuse.

The gift of pilgrimage changed my faith. All my life I've been immersed in Scripture, but most of my learning stayed above the neck, in the realm of ideas. As a pilgrim, I felt Scripture seeping further down into my being. A pilgrim travels dusty roads, swims in holy water, drinks Palestinian-made wine, eats olives and pita bread, lights candles, touches stones, whispers prayers, laughs, cries and sings.

I came to realize that being a pilgrim is not about traveling to a particular place, as much as immersing oneself in the Spirit-filled past so it can infuse our present. As the old hymns say, we're all pilgrims on a journey.

Won't you become a pilgrim this Lent? Come with me to the Holy Land.

~Ruth Huizenga Everhart~

Prophets Today | Lenten Devotional Guide

This inspiring and beautiful Lenten Devotional Guide will be available at the Guest Table near the entrance to the sanctuary in approx. three weeks when the Season of Lent begins.

A Lenten Pilgrimage

By Ruth Huizenga Everhart

Clerk's Report on Business Meeting Actions taken at 1/13 & 14 Council Retreat

1/13 ACTIONS:

Approval of Consent Docket: The Consent Docket was reviewed and then approved unanimously, as follows:

IT WAS VOTED unanimously to approve minutes as distributed electronically of the 11/30/11 Stated Council Meeting, the 12/7 & 12/16/11 Virtual Meetings of Council, and 12/18 Stated Meeting of the Congregation.

IT WAS VOTED to approve as tellers for 2011 the following: Jon Davidann, Paul Haring, Clancy Lyman, Mark Mitchell, Rollo Scheurenbrand, Paul Snipes, John Stiles, E. K. Whiting, George Wyman, and Loren Wilson.

IT WAS VOTED to approve as signatories for CCU bank accounts and investment accounts the following: Paul D. Haring, Clarence K. Lyman, Susan C. Wilson and current finance elder (John Stiles appointed finance elder later in this meeting).

IT WAS VOTED to commission all current Council members and Elder Peter Tchou as voting representatives to all or any of the 2012 scheduled Presbytery meetings.

IT WAS AFFIRMED that Communion is served every Sunday at the 10 am worship service.

IT WAS AFFIRMED that Christ Church Uniting has current property and liability insurance and Workers' Compensation insurance through the United Church of Christ Insurance Board, effective 10/1/11-10/1/12.

Council Stated Meeting Dates: All elders present agreed to hold stated meetings regularly on the 2nd Wednesday of each month, beginning at 6:30 pm.

Witness Commission co-chair

decision: Council AFFIRMED unanimously the decision of 2011 Witness Commission Co-chairs' (John Heidel & Melissa Belanger) decision to distribute a total of eight percent of 2011 operating income (less excise tax, 2010 excess operating receipts and unused pastor search fund income)"

UH Communications Intern: Council AGREED TO ACCEPT Paul Belanger's offer to represent CCU at a sign-up session held by the University of Hawaii Communications Department that could avail CCU the opportunity to receive 20-25 hours of intern service of a CCU communications student.

Facility Use Agreement: Council AFFIRMED John Stiles' continued negotiations with Aloha Yoga Kula, rent terms as follow: \$800 per month in 2012, increasing to \$850 per month in 2013, and increasing to \$900 per month in 2014.

1/14 ACTIONS:

IT WAS VOTED to elect Jane Muench 2012 Clerk of Council.

2012 Elder Appointments: All present confirmed the Elder appointments as set forth in the Diagram at the top of following page.

Commission Meeting Schedule: IT WAS AGREED to schedule Commission meetings quarterly and on the third Saturday of the month, the first round, as follows:

Witness	January 28, 9:30 am
Membership	February 4, 9:30 am
Support	March 3, 9:30 am

Request for Nominating Committee: Nominating Committee Chair Snipes was requested to ask [name] to be a nominee for 2012 Treasurer and report back to Council.

From the Pastor . . . *At the January Council planning retreat, one of the things we did was take time to look back on the last year and celebrate the many ways that CCU engaged in ministry, fellowship, and outreach. You will have a chance to share in that celebration this Sunday in our Annual meeting.*

As we think about the health and vitality of CCU it is clear that one area of strength is our music. Not just the choir, but so many in our congregation have musical skills of voice and/or instrument. The council would like to capitalize on that more. Here are some of the things we discussed:

- *Using a variety of instruments during worship*
- *Having a more contemporary style of worship once a month*
- *Offering a worship service at a time other than Sunday morning aimed at college age/young adults*
- *Broadening the music we sing to include hymns and songs from a variety of sources in addition to the current hymnal*

One of the ongoing conversations in this congregation is the use of video screens for worship. We will be exploring this together more fully in March with two opportunities for congregational conversation.

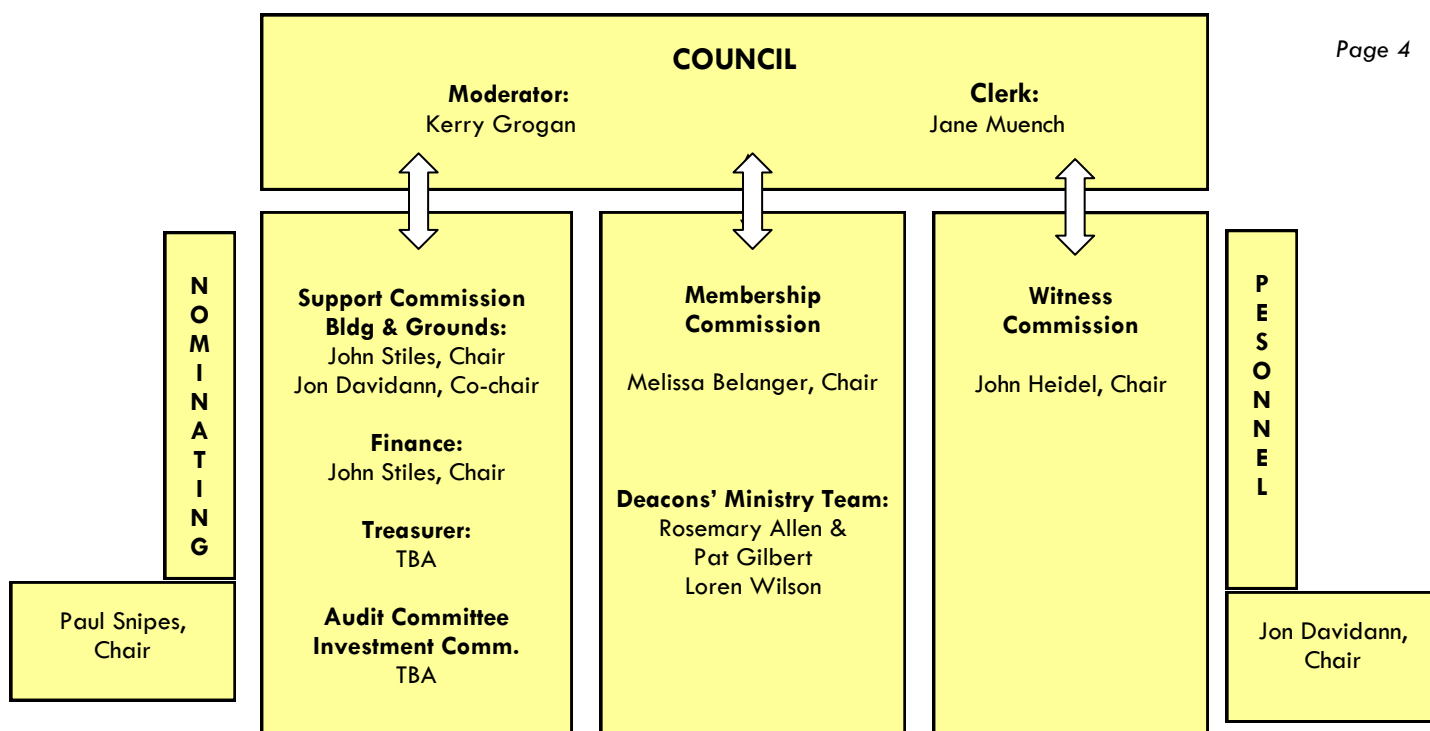
Flat screens for the sanctuary:

Council AGREED to the following plan/schedule of moving forward on this project:

1. Search out the specifics of overall system. (John Stiles and Bill Muench)
2. Demonstrate the use of screen presentations while WCC guest theologian Fred Plumer is present at CCU—March 9-11.
3. Investigate funding, as follows: a) from Witness Commission budget (John Heidel); b) from grants from PC (USA) & Disciples; c) from Special offering.
4. Make presentations to the congregation after worship on 3/18 (includes potluck lunch) and again on 3/25. (John Stiles)
5. Encourage congregation to visit other congregations with systems in place.
6. Call meeting of the congregation for April 15th to vote on purchasing and installing flat screens in sanctuary.

Spring Garden Fair: Council CONSENTED to Claire Schrader's offer to spearhead a spring garden fair featuring organic gardening and edible plants.

February 5th CCU Annual Meeting of the Congregation: The meeting having been previously set for February 5th, IT WAS FURTHER DECIDED to hold it during the worship hour and to incorporate therein a celebration by the congregation of CCU 2011 successes.



Membership Commission Gathering

Saturday, February 4
9:30 am, Ohana Room

Agenda:

If you have additions of either discussion or action items, please contact Membership Commission Chair Melissa Belanger at mbelanger@hawaii.rr.com:

- 1. Special Events/ Order of Worship:**
Lent starting with Ash Wednesday February 22nd
Fred Plumer's (WCC Guest Theologian: Ctr. for Progressive Theology) talk on March 9th and Sunday sermon March 11th
Easter (including potluck?) 4-8-12
Pentecost Sunday 5-27-12 (possible potluck with theme of serving international foods)
- 2. Adult Church at Study**
- 3. Music Ministry**
- 4. Coffee Ministry**



Waste Not . . . *or how to stop the pile up of phone books outside your door*

It is again one of the times of the year that we find a plastic bag filled with too many phone books outside our homes and offices. To reduce the amount of natural resources used, the pollution caused by paper production, the transportation resources and the waste generated by this, here is what you can do:

Log on to www.YellowPagesOptOut.com, enter your ZIP code, and choose which phone books you want to receive. It's quick and easy. Then, for example, instead of all five phone books automatically delivered to the 96734 ZIP code area, you can choose the one(s) you really want.

Or by phone: 1-800-929-3556 to stop Yellowbook delivery, and 833-2018 to stop or limit delivery of Hawaiian Telcom directories.

Though it is too late to stop the ones that are currently being delivered, this should give you control over the ones you receive in the future. (You can change your choices later if you change your mind.)

This may be a small thing, but remember every action matters.

RETHINK— REDUCE— REUSE— RECYCLE

Adult Study Class on Dietrich Bonhoeffer continues through February 5th as more inspiring & stimulating discussion continues.

Bolenge Hospital Report

Page 5

January 12, 2012

Democratic Republic of Congo



Bolenge Hospital in the Equatorial Province of the Democratic Republic of the Congo (DRC) was built in 1928 by the Community of Disciples of Christ in the

Congo (CDCC), a partner church with Global Ministries for over 100 years. In a typical year Bolenge Hospital treats over 16,000 patients. Much work is done at Bolenge Hospital to provide early childhood vaccinations, prenatal visits, and obstetrical care as well as treatment of chronic and punctual illness and disease.

In June 2006, the Bolenge Hospital experienced an electrical fire which completely destroyed the hospital's newer main building and equipment. Community members worked hard to save the people inside the building before it was completely engulfed by flames and no human lives were lost. Approximately three years after the fire, the new pediatric ward building was completed. This was a major triumph in the rebuilding of the hospital. Since then, the CDCC has been in the process of reconstructing a second hospital building that will be used primarily for maternity patients and administrative offices.

CCU continues to support the rebuild of Bolenge Hospital because of generous donations given in honor of Paul Snipes by Charles and Caroline Neal.

This year, alone, Paul has directed these donations in the amount of \$750 be given to the Bolenge Hospital Rebuild Project, which CCU has done.

In past years, CCU has given generously to this rebuild project . . . so dear to Paul & Pat Stiles.

Information was recently received from the Community of the Disciples of Christ in the Congo (CDCC). The building project is moving forward, as noted in the photos. The building should be completed by March 2012 or shortly thereafter. The CDCC plans to dedicate and celebrate this new accomplishment publicly in August 2012.

Family Promise . . . has just announced an exclusive partnership with The Company Store, a leading online retailer of bedding and home accessories, for its **Buy One, Give One** campaign. From now through March, The Company Store will match every purchase of a comforter with a donation of a comforter to a child served by Family Promise Affiliates nationwide. They have committed to donating between 10,000 and 20,000 blankets to Affiliates throughout the campaign. Family Promise Hawaii has asked for 50 comforters.

To get a discount of 20%, use the discount code BO-GO20 when you go online to order at <http://www.thecompanystore.com/>.

Mahalo to Family Promise volunteers at CCU hosting January 15-22

Twenty-two of our CCU members and friends, five from the Mevlevi Order (Sufi), two from Shambala Meditation, and one from 1st Presbyterian Church, along with five teenagers from 1st Pres and Koolau participated in setting up, providing food supplies and cooking dinner, staying overnight, playing with the children, putting things back to order and laundering the bedding. We had the same three families staying with us: five adults, and 8 children, ages 10 months to 9 years of age. They say they are always glad to come back to Christ Church Uniting. Isn't that great?!

The Hawaii Public Housing Authority is gearing up for a February volunteer month, the goal of which is to paint and repair 150 vacant public housing units so homeless families can move in.

If you can paint or repair, please contact me by email and I'll get you on the list!

david.gierlach@gmail.com

(Event Chair)

Before responding to David Gierlach . . . Are CCUers interested in gathering as a group to volunteer one day? Let Marian Heidel or Kerry Grogan know soon.



About Presbyterians

By Rosemary Allen

Thinking "About Presbyterians" I came across a previously written article (several years ago) which reminds us once again of part of CCU's quite unusual heritage:

Although American Presbyterianism has a 300-year history, there have been some divisions and separations along the way. Our 217th General Assembly in Birmingham in 2006 celebrated a reunion as the assemblies of our Presbyterian Church U.S.A., Cumberland Presbyterian Church, and the Cumberland Presbyterian Church in America met together to worship and recognize their common history.

When I became a Presbyterian in 1950 I did not know I was joining the Northern Presbyterians. I did not know that in Texas (& other southern states) there were then also Southern Presbyterians. The split between the two came of course during the era of the Civil War. And it took until 1983 to re-unify as Presbyterians U.S.A.—following many years of effort toward that goal.

The two Cumberland Presbyterian bodies, however, continue to maintain their independence. The Cumberland Presbyterian Church organized in 1810. They were frontier churches and needed pastors; they believed Presbyterian education standards were too strict and limited the availability of pastors who could serve in the developing regions of the American frontier.

In 1869 the Cumberland Presbyterian Church in America was organized by the "white" Cumberland Presbyterians for post-Civil War "black" Presbyterians. Today the earlier CPC numbers 83,000 members. The CPE in America has just over 15,000 members.

Our own CCU merged church has interesting connections to histories of such changes. When the Disciples of Christ organized in 1832 among the major founders were a Presbyterian pastor, Alexander Campbell, and his son, Thomas, also a Presbyterian. In 1974—also after much effort—a unique combination of Disciples and Presbyterians became Christ Church Uniting in Kailua, Hawaii. CCU maintains close ties with both "parent" denominations—thus a continuing emphasis on our roots!



About Disciples . . .

February 19-26 is Week of Compassion. The mission of Week of Compassion is "the relief, refugee and development mission fund of the Christian Church (Disciples of Christ) in the United States and Canada. We seek to equip and empower disciples to alleviate the suffering of others through disaster response, humanitarian aid, sustainable development and the promotion of mission opportunities." Week of Compassion partners with Church World Service, One Great Hour of Sharing and many other organizations to make a difference in the lives of people affected by disasters, war, poverty, and famine. You can read more about Week of Compassion by going to www.weekofcompassion.org. Week of Compassion is just one of beneficiaries of CCU outreach giving.

Memories

by Rosemary Allen

People seem to be intruding on my thoughts as newsletter time comes around. Way back in the early 1960s a group of Kailua & Kaneohe people came together to form a Presbyterian church on the windward side of Oahu. After months of organizing & gathering for worship Sundays at Kailua High School's cafetorium (hauling in portable organ, small pulpit, hymnbooks, nursery care furnishings, etc. etc!), Christ Presbyterian Church was chartered on February 23, 1964. By 1966 our new church building was at home at 1300 Kailua Road.

Meanwhile just down the road Windward Christian Church (Disciples of Christ) had been at work & worship

since the 1950s. Through the years the two neighboring church groups carried on many projects & ministries cooperatively. By 1972 there were talks of merger—committees were formed (of course!) and the process began. In February of 1974 the union was formed and Christ Church Uniting became one body, retaining ties with both "parent" denominations.

Back to the people—so many devoted & hard-working souls as part of CCU—so many diverse "personalities"!!!

From the two original churches earliest days only Peter & Cynthia Tchou & myself from CPC and Paul Snipes from WCC remain active at CCU. Other still active pre-merger people are George & Mary Ann Wyman, Pat Gilbert, Virginia Bail, E. K. Whiting,

and Donna Bean. Their "joining" dates range from 1965 to the 1974 merger.

In the later decades of that 20th century many of CCU's familiar and very "active" members joined us. Many had families of active children, too, and our upstairs classrooms were filled on Sundays. These include the Muenches, Heidels, Harings, Renfroes, Granthams, Zeilingers, Lymans, Wilsons, Stiles, Belangers & Davidanns. Also pre-2000 CCUers include Ardie Aucoin, Wendy Teixeira, Dianne Brookins, Mary Lee Stone, Joyce McGuire, and Jean Tsuji.

Yes, after 2000 more people became part of CCU and continue devoted commitment to its place on Kailua Road and in the larger Christian community. But that is the continuing story!

Lay & Elder Worship Assignments for February

If you are not able to fill your assignment, please try trading with someone and/or notify the church office.

* **T Prayer = Prayer of Thanksgiving**

Date	Name	Duty
2/5	Mary Stone	Usher/Greeter
	Lolo Mae McAvoy	Usher/Greeter
	Kerry Grogan	Morning Prayer
	Lauren Medeiros	Scripture Reader
	Melissa Belanger	T Prayer/Serve Comm./Bldg Lock-up
	Jane Muench, John Heidel	Add'l Communion Servers (Silver)
2/12	Cathy Lyman	Usher/Greeter
	Loren Wilson	Usher/Greeter
	Paul Snipes	Morning Prayer
	Jan Stiles	Scripture Reader
	Jon Davidann	T Prayer/Serve Comm./Bldg Lock-up
2/19	Mark & Connie Mitchell	Ushers/Greeters
	Marian Heidel	Morning Prayer
	John Heidel	Scripture Reader
	John Stiles	T Prayer/Serve Comm./Bldg Lock-up
2/26	Alice Folkart	Usher/Greeter
	Paul Haring	Usher/Greeters
	Claire Schrader	Morning Prayer
	E. K. Whiting	Scripture Reader
	Jane Muench	T Prayer/Serve Comm./Bldg. Lock-up

February Communion Preparation: Mary Ann Wyman
February Tellers: TBA

February Birthdays

Emma Peters	1
Brian McCreanor	4
Lauren Buck Medeiros	8
Clancy Lyman	10
Susan Wilson	10
Scott Peters	13
Jarryd Magbee	19
Jan Stiles	21
Paul Snipes.....	25
Ardie Aucoin	26

February Anniversaries

Charlene Hosenfeld & Rollo Scheurenbrand	23
---	----

February Flower Calendar

Feb. 5	Belanger
Feb. 12	Lyman
Feb. 19	Stiles
Feb. 26	Open

***Congratulations to
Seagull Schools on your
40th Anniversary,
January 14th, 2012,
celebrated at your newest
school located at Ko Olina,
Kapolei, Hawaii.***

***It has been CCU's privilege to have
had Seagull's presence in our
building for 40 years!!***

