



"The Messenger of Love"

Ka Elele Aloha

February 2008

Volume 12 Issue 2

Christ Church, Uniting Disciples and Presbyterians Worship—Sundays 10 am
 1300 Kailua Rd., Kailua, HI 96734-4356 Phone: (808) 262-6911
 Reverend Fabian M. ("Buddy") Summers, Pastor Phone: (808) 780-1583
 Email—ccu@hawaii.rr.com Website—http://home.hawaii.rr.com/ccuhawaii

Features

"Going Forward"
Retreat Report 1

Summary of Council
Analysis, Strategy &
Starting Point 1

Contents

About Presbyterians 5

Adult Study 2

Birthdays/Anniver's 7

Child Safety Policy 6

Conscious Consumer 5

Event Schedule 3

Flower Calendar 7

Memories 6

Meyer Lemons 6

Vision Statement 2

Witness Commission 4

This issue of Ka Elele Aloha
 runs through February
 The March 2008
 newsletter
 information deadline is
 February 22nd.



Report from Saturday's Retreat: "Going Forward"

By Buddy Summers

According to George Wyman, two thirds of the church families participated in the Retreat Saturday. From the Pre-Retreat leaders' meeting at 8:00 AM through the turning out of the lights at 3:00 PM, there was a beautiful spirit, enthusiasm, and plenty of CCU creativity. The pot-luck eating was nice too.

Rosemary Allen's presentation brought us the blessing of heritage energy. She reminded us that CCU has a tradition of being on the cutting edge and of negotiating differences. Bob Grantham held up a mirror helping us to see and smile at how we are today: diverse, energetic, not as young as we used to be.

We come from nearly twenty different religious traditions (giving rise to the quip: *Christ Church Uniting Disciples and Presbyterians—and apparently just about everyone else*). In the past ten years, our members and friends have visited literally every continent and numerous countries.

Connie Mitchell put our attendance and membership decline and the challenge to our viability in social and historical perspective, showing us "What's Changed Out There." Pastor Buddy shared Council's analysis, strategy, and recommended starting point (summarized in the article parallel to this article) for CCU's renewal. His presentation was entitled, "There is a Way."

After an early "extraordinary" lunch, everyone spent time in one or two of the three workshop groups where they began to develop action plans intended to lead over time to an **increase in average worship attendance** since that is where our energy for mission comes (as well as new members and friends)—i.e., from

Summary of Council Analysis, Strategy and Starting Point

(Presented to 2/3rds of Church Family at Saturday's Retreat)

Analysis of our Situation

- We are a diverse and inclusive congregation.
- We see the Spirit of God in everyone.
- For many years, we have given at least 10 percent of our income for ministries directed by others, engaged in hands on ministries collaboratively and individually, and been supported by a creative worship service, full-time Pastor, part-time Office Administrator, Choir Director, and Organist.
- Our memory includes once having been a program-sized church (technically a church with average worship attendance of 151-350) and more recently a pastoral-sized church (51-150).
- We have a distinctive Mission Vision, style of worship, and sense of community.
- A short-fall in projected income for 2008 led us to freeze salaries and projected expenditures at 2007 levels while we ask what it is that God is saying to us at this time.
- We are a Pastoral-Sized Congregation whose average worship attendance has declined to the point of making it nearly impossible to continue without intentional course corrections.
- Council has listened to the congregation and for God's call to CCU at this time. Council has done research, teased out the threads and connected the dots.

Report from Saturday's Retreat: "Going Forward"

the gathering community, present to each other face to face.

One workshop was about **"Personal Invitations:** Exploring how can we become not only an inviting church but a church whose members actually invite others to come and find wholeness and healing through an encounter with God as experienced through this faith community."

Another was about **"Putting Our Light on a Hill:** Exploring the value and need for a more deliberate public proclamation through an upgraded website and public relations of the Good News as it is refracted through CCU."

The third workshop was **"Inviting and Intriguing Campus:** Exploring what is needed to make the campus, which is already visited by hundreds of persons each year through our Common Ground program, so inviting and intriguing that visitors are drawn to return to explore the faith community itself."

The next Saturday All Church/All Day (not really) Retreat/Workshop will be Saturday, February 16, 8:45 AM – 3 PM. At that time, participants will celebrate what has already been done, collaborate in finalizing plans for CCU's mission and renewal strategy, and develop budget plans to support the mission and renewal strategy for the remainder of 2008, which will then be presented for adoption at the Annual Meeting following worship, Sunday, March 16.

Summary of Council Analysis, Summary and Starting Point

Strategy

- Since the worship attendance and income crisis is relatively new even through there has been a long downward trend (i.e., 53 in 2007 versus a twelve-year average attendance of 65 with the first projected shortfall only just appearing), intentionally downsizing into a family-sized church (part-time pastor, no support staff, expecting average worship attendance of less than 50) does not seem like an appropriate response and it is not a renewal strategy.
- Council sees a succession of emphases that are needed for long-term renewal: Increase Worship Attendance, Focus on Member Care (everything from developing new member classes and making available introductory Bible studies to checking with members when activity levels drop off), Improved Focus on Stewardship (especially upon interpreting what our mission dollars are doing), Revisiting our Mission Vision.

Starting Point

- Since our fundamental Energy for Mission arises from the gathering of Members and Friends, Council will take Worship Attendance as a key indicator for renewal and growth in average worship attendance as the Goal for the beginning focus of our renewal activities.
- Council has identified three areas where action plans can be developed in support of achieving the Goal of Increased Average Worship Attendance: **Personal Invitations, Putting Our Light on A Hill, and Intriguing and Inviting Campus.** (These areas are described in Retreat Report.)

CCU Vision Statement June 2005

**As a witness to our faith,
in three to five years,
CCU will be known in Kailua
for providing practical support
for social justice actions,
community building, and
spiritual growth.**

The CCU approach to Jesus and scripture will be seen as loving and inclusive. We see the Spirit of God in all people. We see Jesus as human and completely united with the Spirit of God. He made God the center of his life and calls us to join him and do the same. We come together as Church to answer that call.

We study and reflect upon the Jesus of Scripture as healer and teacher of universal moral principles demonstrating a life lived with humility and a deep passion for social justice, peace and love.

Scripture understood in the light of Jesus reveals God as loving, compassionate, non-violent, and inclusive. Where there is an interpretive opportunity, in light of our experience of Jesus' presence, CCU will choose the most loving, peace-promoting, and justice serving path, as, we believe, did Jesus himself.

We are an open and inclusive church that welcomes a diversity of people, opinions, beliefs and spiritual paths. We are a multi-generational, diverse and progressive

faith community that values and encourages spiritual growth and responsibility within each individual and the congregation. We enjoy wrestling with the challenging social and intellectual issues posed by Christianity.

We are a church that believes in the importance of peacemaking and we are known by the actions of our members in the larger community. We are a church with a sense of celebration and beauty that finds artistic expression of our faith through creative worship, especially through music.

We are a faith community that looks for God to be at the center of our lives and we invite others to join us on our path. We are an extended family offering support; we love and care for one another.

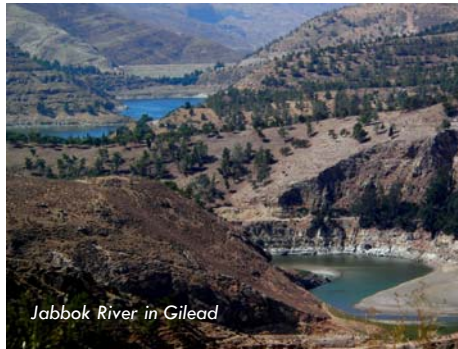
All Church Retreat and Workshop

February 16h 9 am - 3 pm
on the **CCU** Campus

- Celebrate what has been done
- Finalize plans for **CCU's** mission & renewal strategy
- Develop budget plans to support mission & renewal strategy for the remainder of 2008, to be presented for adoption at the Annual Meeting of the Congregation on Sunday, March 16th, following worship.

Lunch together: Potluck!

“The Jabbok River Reflections” neither a new book nor a television series it is...



Jabbok River in Gilead

This sermon series will continue through March 16th when **CCU** will meet following worship to embrace the congregationally developed long and short term plan for the rebirth and growth of **CCU**.

The series title refers to Jacob's long night beside the Jabbok River where while he was between a rock and a hard place he wrestled with God never giving up, never letting go. With the dawn came blessings. **CCU** is similarly engaged with God.

Each week, the sermon explores how a certain portion of scripture illuminates or informs the work we are doing.

CCU Adult Study Final sessions of

“Listening for God through Contemporary Literature”

Feb. 3 & 10

Facilitators: Leilani Madison
& Paul Haring
Location: Church Sanctuary
Time: 8:30 - 9:30 am

Contemporary literature may not be the most predictable place to listen for God, but it may turn out to be amongst the most rewarding as the reader may discover how life and faith merge in surprising ways and places.

This adult study involves the participants in reading excerpts of writings, both fiction and non-fiction, of several contemporary authors, followed by group discussion of those writings and responses to reflective questions.

Wrap-Up Discussion of Film Series:

“God’s Warriors” . . . Islam, Christian & Jewish
Tuesday evening, 2/5
6:30-9pm (in church sanctuary)
Potluck: Bring something to share for dinner.

February Event Schedule:

Key: K = Kitchen L = Lanai PS = Pastor's Study S = Sanctuary

2/2, 8am	Men's Breakfast @ Honey's@ Koolau Golf Club
2/3 & 10, 8:30am	Adult Study/"Listening for God thru Contemporary Literature"
2/5, 6:30-9pm (S)	Wrap-Up Discussion of Potluck/Film Series: God's Warriors:
2/7, 6:30 & 7:30pm (S) & succeeding Thursdays	Chancel Ringers & Chancel Choir, respectively
2/9, 10:30am	Women's Aloha Fellowship Brunch @ Cinnamon's in Kailua
2/9, 7pm (S)	Taizé-style worship
2/11, 7-8pm (S)	Family Promise Training
2/13, 7-9pm	Council Stated Meeting
2/16, 9am-3pm (CCU)	Church Retreat and Workshop
2/17-2/24	CCU hosts Family Promise guests
2/23, 8am-5pm (S&K)	Common Ground event: Harp Retreat

Witness Commission . . .

Family Promise News:

Christ Church will be hosting houseless families again on February 17 – 24. Volunteers are needed to provide:

- 6 pm Dinner Meal for 13 adults & children, plus dinner hosts—Call Pat Gilbert, food coordinator, 254-3509
- 8pm Overnight hosts (1 female, 1 male), who also assist guests with breakfast and who close up at 7:15 am—Call Marian Heidel, Coordinator, 261-4585, or sign up on the Breezeway Bulletin Board.
- Feb. 17, after worship: HELP SET UP QUARTERS upstairs
- Feb. 24, after worship: MOVE BEDS TO Kaneohe 7th Day Adventist Church; PUT ROOMS BACK TO THE WAY THEY WERE; Volunteers to launder the bedding

During this week we also welcome volunteers, teenagers or adults, to do special things with the children: crafts, read stories, do musical things with them, watch the kids on the playground. Those who interact with our guest families must read and sign the CCU Child Safety Policy and attend a Family Promise training session. The next F. P. training session will be held on Monday, February 11, 7—8 PM, in the church sanctuary and is offered as a first-time training as well as a refresher course.

This particular week we MAY be hosting, not our Windward families, but the families in our Honolulu host churches. They only have 8 churches in their rotation, so far, and this particular week none of them can host. So one of our Windward churches may take on the job of hosting our Windward families two weeks in a row so that WE can serve the Honolulu group! How about that for commitment!

If you have questions about any of these jobs, please call Marian Heidel or Estelle Codier, and let us help you find you a comfortable role to play. It is fun!

Lulu Stevens Grant . . .

As you know, we applied for and received last spring from the Presbytery of the Pacific the Lulu Stevens Grant of \$5,000 to help us with the financing of our CCU Family Promise program. Our own Estelle Codier, UH professor and nursing instructor, proposed a health screening pilot program for F.P.'s incoming families, asking for \$1,000, which we granted. Since the program began, over a dozen families have received health screening and in some cases subsequent medical follow up. The data that has been collected already points to some interesting health issues and trends that will be in need of further study! As a replacement nurse practitioner is being recruited, health screening is continuing by UH masters students under the supervision of Estelle. The data collected by these health screenings will provide the basis for further grant applications to other sources in late 2008/2009, which will target nurse practitioner funds for Family Promise.

Mission Partners . . .

As reported in the November CCU newsletter, we have begun a special partnership with Ed and Miriam Noyes, agricultural and literacy missionaries in the Democratic Republic of Congo. This week we are sending a check of \$713 from our 2007 Witness funds, earmarked for their work in Lusekele, near Vanga. One of the items they desperately need is a truck, so our gift may be added to that fund.

We will be developing some ways to be in touch with them and to inform our congregation of their work, but for a start, those of you who have and like computers, go to <http://noyescongo.blogspot.com> and you can read the entries on their work, which are very interesting. For those who don't have computers, Marian would love to send you print-outs of their communications and newsletters. If you would like that, please let her know by calling 261-4585. And if you have suggestions for how we can make this relationship more personal and exciting, we welcome your ideas.

House of Life

Another recipient of CCU's end-of-the-year Witness giving is the House of Life, a home for orphans in the capital of DR Congo, Kinshasa. A check for \$713 is being sent. An update on this ministry to children by the Community of Disciples of Christ of the Congo was printed in the November issue of this newsletter, and we hope to hear more from them. Our introduction to this ministry came from Pat Snipes' heartfelt desire to help the children abandoned on the streets, many orphaned due to AIDS. We want to continue supporting this work in her honor and because of our mutual concern.

Christmas Offering

Thanks to CCU members' generosity, the Christmas Offering totaled \$1,741.79. Half of this was sent to the denominational headquarters of the Presbyterian Church (USA) where it provides financial assistance to servants of the church and supports seven racial/ethnic schools, and half to the Christian Church (Disciples of Christ) where it supports the ministries of our Re-

from Boys & Girls Club of Hawaii Windward Clubhouse

Dear Friends:

Mahalo for being a friend of the Boys and Girls Club of Hawaii Windward Clubhouse. Thanks to you, we can continue to build a brighter future for Hawaii's young people and inspire and enable our youth to realize their full potential as responsible and caring citizens.

Your generous gift of \$174.38 will benefit the annual operating fund.

One day in the life of a child can make a huge impact on that child's future. One caring adult can create an unbreakable bond that will last a lifetime. Boys & Girls Clubs can offer hope to an entire neighborhood. Each of our gifts can open the door to a brighter tomorrow for more of our children.



Being a “Conscious Consumer”

by Charlene Hosenfeld
of the CCU Green Team

Churches and their members are consumers. Food, beverages, plates, utensils, cleaning supplies, office paper and equipment, and more are purchased on a regular basis. To bring purchasing practices in line with our social, economic, and environmental values, several important steps can be taken including buying “fair trade,” organic, and natural products.

I always advocate that we Re-think our needs and our buying habits, Reduce what we purchase/use, Re-use what we have, and Recycle everything possible. We are, in fact, all consumers, and so my suggestion is that we become “**conscious consumers.**” A conscious consumer considers:

- where something is produced and how far it travels,
- the kind and amount of resources used in production (e.g., petroleum, toxins),
- amount and kind of waste generated (e.g., plastic, pesticides, chemical fertilizers),
- where this waste goes (e.g., in the landfill, in the ocean),
- other pollution created in its manufacture/transport/disposal,

- who grows or makes the product and their working conditions (e.g., sweat shop, factory farm),
- whether s/he needs the product, and
- if a better alternative exists.

A conscious consumer does not just consider the monetary cost of a product, but also considers the “**true cost**”—in terms of social, health, economic and environmental impacts. True cost thinking links economic issues with quality-of-life issues. A plastic toy made in China, a shirt made in a far-away sweat shop, and heavily pesticided crops might be relatively inexpensive in dollars and cents, but the true cost is much greater. To calculate true cost, factor in such things as how the workers’ lives are affected, whether unnecessary pollution and non-recyclable waste is generated, whether rainforests are needlessly cut and natural habitats destroyed, and how the health of the planet and her inhabitants are affected.

Being a conscious consumer means educating ourselves, paying attention, thinking about our choices, and using our purchasing power to engender positive and far-reaching social, economic, and environmental effects. Many future CCU Thinks Green columns will focus on ways to be a conscious consumer, as well as on other ways to live consciously.

Both the Presbyterians and the Disciples at the national level have for many years been directly calling their members to environmental stewardship. This information has been slowly percolating down through the decades and the denominational bureaucracies. Our job now is to act on these calls to action.

We can all make small steps or big steps in the right direction. **Every action matters.**



About Presbyterians

by Rosemary Allen

Each year in November our Presbyterian Today magazine includes an Advent calendar, copies of which we make available to our CCU members. The theme of the 2007 calendar was “Spreading The Light of Christ.” Its messages reminded us of ways that light comes to people all around the world. Of the 25 messages I’d like to quote a few to carry on into the new year:

Presbyterian missionaries John & Given Hospel carry on a holistic ministry of health care, evangelism, & community development with the Suri people of Ethiopia who have had little knowledge of Jesus Christ.

The largest eye-care facility in the world is Christian Hospital in Taxila, Pakistan with its cataract removal procedure pioneering in that part of the world. Presbyterian doc-

tors & nurses are on the staff in this predominately Muslim region.

In Lima, Peru’s Universidad Biblica Latino-Americana Presbyterian workers Harry & Debbie Horne are teaching to help equip pastors & lay leaders for service in Peruvian congregations.

In Moscow (Russia) Protestant Chaplaincy is a “beacon of hospitality” for students & refugees who come to Russian from the developing world. Presbyterian mission workers Bob & Stacey Bronkema serve there, offering Bible study, help with immigration issues, computer training, & a soup kitchen—as well as worship services.

Here in the USA Presbyterian Disaster Assistance continues the long-term work of restoration & aid following Hurricane Katrina along the Gulf Coast.

(This is only a small sample of author & CA Presbyterian pastor Eugenia Gamble’s description of how Christ’s light can be spread. If you did not see her Advent meditations, let me know. I have a few extra copies.)



Memories

By Rosemary Allen

While sorting through post-holiday materials, I came across another of the late Dave Steele's poems, written in the 1980s after the Steeles had moved from here to San Rafael, CA. It was sent to the Heidels, who shared it with me. Now it is shared with all of you for it seems so appropriate for us as we work on CCU's present-day concerns.

RECYCLING

Some basic rules define the source
Of pleasant social intercourse.
When friends share cookies (chip or date)
We don't return an empty plate,
But send it back all nicely spread
With slices of zucchini bread.
And piques of proper social training
Remind us, as we're entertaining,
To see that we do not forget
The people owed a dinner debt.
So social bonds are smooth and flat
When glued with careful Tit for Tat.

But when it comes to heaven's grace
Our Tat for Tit seems out of place.
How few of us command the wealth
To pay God back for kids or health,
For love, support, for friends, and talents.
We can't pay back the Lord above
For all His countless gifts of love.

God's love comes to us as a trust;
And when we understand, we must
Find someone else by dusk or dawn
Who needs that love, and pass it on.

The Lord is in His temple Enter
Into His recycling center.

Child Safety Policy: It is the intention of CCU to provide a space safe from child abuse. Staff and lay leaders are screened and educated about child abuse in general and both Hawaii Law and CCU policies in particular regarding prevention and reporting of suspected abuse. A copy of the CCU Child Abuse Policy is available from the church office upon request.

About Easter flowers . . .

Thank you CCU and all the people that brought poinsettias in December. You did so well we are going to do the same thing for Easter Sunday, March 23rd, with Easter lilies. This way we can show our dedications as we always have done at Eastertime. Give your dedications to Jane in time to be printed for Easter Sunday. Bring a lily and mark your container so you can be sure it's yours to take home.

Thank you, June Grantham



Easter Sunday Lily Dedication

Name _____

Dedication _____

Please submit completed form to Jane Muench
or the church office by March 16th.

About those lemons Pat Gilbert shares with all of us at CCU . . .
those Meyer lemons . . . read on . . . (posted article from Honolulu Advertiser)

BOWL OF SUNSHINE

Lemon lore

If Cezanne had lived not in France but in Southern California, his still lifes would have overflowed with Meyer lemons. Plump, smooth-skinned, colored an unmistakable dark yellow – canary yellow, the color of egg yolks or the sun at noon – they're sweeter than other lemons, with an intoxicating aroma that has hints of honey and thyme. A cross between a lemon and a sweet orange, imported to the U.S. from China 100 years ago by the man whose name they bear, the Meyer lemon is a furiously addictive fruit. Meyer's promise sweeter juice, a thinner peel, less acid and a more floral scent (and taste) than other lemon varieties. And they grow in Isle gardens and back yards. For recipes and all things lemony, go to meyerlemons.diaryland.com.

— Advertiser staff



Lay & elder worship assignments for February

If you are not able to fill your assignment, please try trading with someone and/or notify the church office.

Date	Name	Duty
2/3	John & Jan Stiles	Ushers/Greeters
	Jane Muench	Morning Prayer
	Ann Bell	Time with the Younger Church
	John Hanlin	Scripture Reader
	Dianne Brookins	People Prayers & Communion Server
	Beth Davidann	Communion Server w/ Table Prayer
2/10	Cathy Lyman & Wendy Teixeira	Ushers/Greeters
	Dianne Brookins	Morning Prayer
	Lauren Medeiros	Time with the Younger Church
	Bill Muench	Scripture Reader
	Paul Belanger	People Prayers
	Bob Grantham	Communion Server w/Table Prayer
2/17	Paul Haring & Estelle Codier	Usher/Greeters
	Leilani Madison	Morning Prayer
	Estelle Codier	Time with the Younger Church
	Cathy Lyman	Scripture Reading
	Marian Heidel	People Prayers & Communion Server
	Jim Burgoyne	Communion Server w/Table Prayer
2/24	Loren Wilson & Donna McAfee	Usher/Greeters
	Dennis Peters	Morning Prayer
	John Heidel	Time with the Younger Church
	Carol Hanlin	Scripture Reading
	Beth Davidann	People Prayers & Communion Server
	Connie Mitchell	Communion Server w/Table Prayer

February Birthdays

Emma Peters	1
Lauren Buck Medeiros	8
Clancy Lyman	10
Susan Wilson	10
Malia McAfee	12
Scott Peters	13
Keoni Paakaula-Lozier.....	17
Cari Stiles.....	18
Jarryd Magbee	19
Jan Stiles	21
Paul Snipes.....	25
Ardie Aucoin	26
Stephanie Hudgins.....	28

February Anniversaries

Charlene Hosenfeld & Rollo Scheurenbrand.....	23
---	----

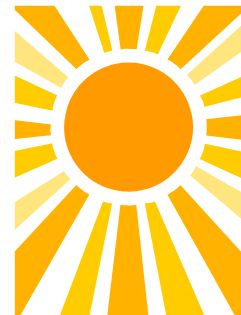
February Flower Calendar

February 3	Allen
February 10	Snipes
February 17	Gilbert
February 24	Tchou

Children in Worship: Bible Stories

Children love stories! A new series began December 2 and runs through Eastertime, titled: **"Who is Jesus? Let me tell you a story!"** February story selections follow:

February 3	John 2:1-11	At a Wedding
February 10	Matt. 4:1-11	On Retreat
February 17	Matt. 4:18-22	First Followers
February 24	Matt. 4:23-25	Famous Healer



Christ Church Uniting . . . providing practical support for . . . social justice actions, community building & spiritual growth.

CHRIST CHURCH UNITING

Disciples and Presbyterians

1300 Kailua Road

Kailua, HI 96734-4356

(808)262-6911

RETURN SERVICE REQUESTED

CCU gratefully
receives donations
each Sunday
for the
Kailua Food Pantry.

*Christ Church Uniting ...
"providing practical support for
social justice actions,
community building,
and spiritual growth."*

